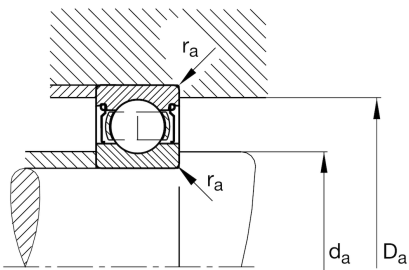
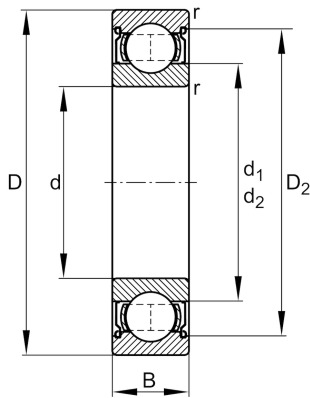
**FAG****6302-2Z**

Deep groove ball bearing

Schaeffler ID:
0167227280000Deep groove ball bearing 63...-2Z, single
row, shields, steel sheet metal cage

Technical information

**Dimensions**

r_{\min}	1 mm	Minimum chamfer dimension
D_2	35 mm	Caliber diameter outer ring
d_1	23.6 mm	Shoulder diameter inner ring
	85.5 g	Weight

Main Dimensions & Performance Data

d	15 mm	Bore diameter
D	42 mm	Outside diameter
B	13 mm	Width
C_r	12,000 N	Basic dynamic load rating, radial
C_{0r}	5,300 N	Basic static load rating, radial
C_{ur}	360 N	Fatigue load limit, radial
n_G	21,400 1/min	Limiting speed
n_{gr}	17,500 1/min	Reference speed

Mounting dimensions

$d_{a\min}$	20.6 mm	Minimum diameter shaft shoulder
$D_{a\max}$	36.4 mm	Maximum diameter of housing shoulder
$r_{a\max}$	1 mm	Maximum fillet radius

Calculation factors

f_0	12	Calculation factor
-------	----	--------------------

Temperature range

T_{\min}	-20 °C	Operating temperature min.
T_{\max}	120 °C	Operating temperature max.